

## WOVEN PARQUET BEIGE

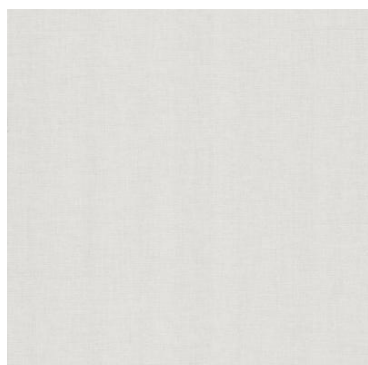
Warranty  
**10 YEARS**

Application temperature  
**FROM +15°C TO +25°C**

Storage from +5°C to +35°C  
**3 YEARS**

**LENGTH** ↔ **30 m**

**WIDTH** ↔ **122 cm**



## CHARACTERISTICS

Primer/Primer +	✓
Kraft paper release liner	✓
Stretchable	✗
Calendred polymeric	✓
Interior installation	✓
Outside installation	✗
UV-Resistant	✗
Permanent Air Release	✓
Adhesive	
Appearance	Mat
Thickness	450 µ
Scratch-proof	Average

## CERTIFICATIONS

CE	✓
IMO	✗
MED	✗
RAIL	-
REACH	✓
TCHIBO	-
TABER TEST	-
VOC	✓

## GENERAL

### ADHESIVE STRENGTH :

91 minutes after installation 1.04 Kg/cm  
24 hours after installation: 1.43 Kg/cm  
3 days after installation: 1.51 Kg/cm  
7 days after installation: 1.65kg/cm

### ADHESIVE STRENGTH AT HIGH TEMPERATURE :

After the 1st day: 1.37 Kg/cm  
After 7 days: 1.03 Kg/cm

### DURABILITY :

This product offers exceptional resistance to water, dirt, abrasion, UV rays and wear (yellowing, crackling, scaling, delamination).

### MAINTENANCE :

A quick and easy material to maintain, its external surface's remarkable qualities facilitate cleaning, prevent marking and impede mould growth. Maintenance can be performed with all types of household cleaning products, other than abrasive products such as acetone or white spirit.

*Non-contractual visuals and data, Cover Styl' reserves the right to change the composition of its films at any time. The rendition of the colours and finishes on the computer may vary according to the screen and not give a true representation of the true appearance. We therefore recommend you order a sample on line or contact us so that we can examine the finish that best adapts to your requirements. Due to the slight differences in colour in production runs, we advise you to purchase the amount you require in one go to avoid any difference in appearance in the execution of your Cover Styl' project.*